

LAND CERTIFICATE NO. 53526 COPY

Land Certificate No. 53526 Tulcea

A. Part I. Property description LAND

within the built-up area

Address: Loc. Tulcea, Jud. Tulcea, ALEEA CRUCHI ROSII

Item no.	Cadastral number Topographic number	Surface* (sqm)	Observations / References
A1	53526	2,113	Unfenced land; Building delimited by the fence of private properties.

B. Part II. Owners and documents

Entries regarding property rights and other real rights		References
120627 / 16/12/2022		
Administrative Act no. 246, dated 29/09/2022 issued by the LOCAL COUNCIL OF THE MUN. OF TULCEA; Administrative Act no. 15944, dated 28/11/2022 issued by TULCEA TOWN HALL;		
B1	Provisional registration, right of PROPERTY according to art. 41, paragraph 5, index 1 of Law 7/1996, republished, acquired by Law, current share 1/1, initial share 1/1	A1
1) TULCEA MUNICIPALITY, CIF (Fiscal Identification Code): 4321429, public domain		

C. Part III. ENCUMBRANCES.

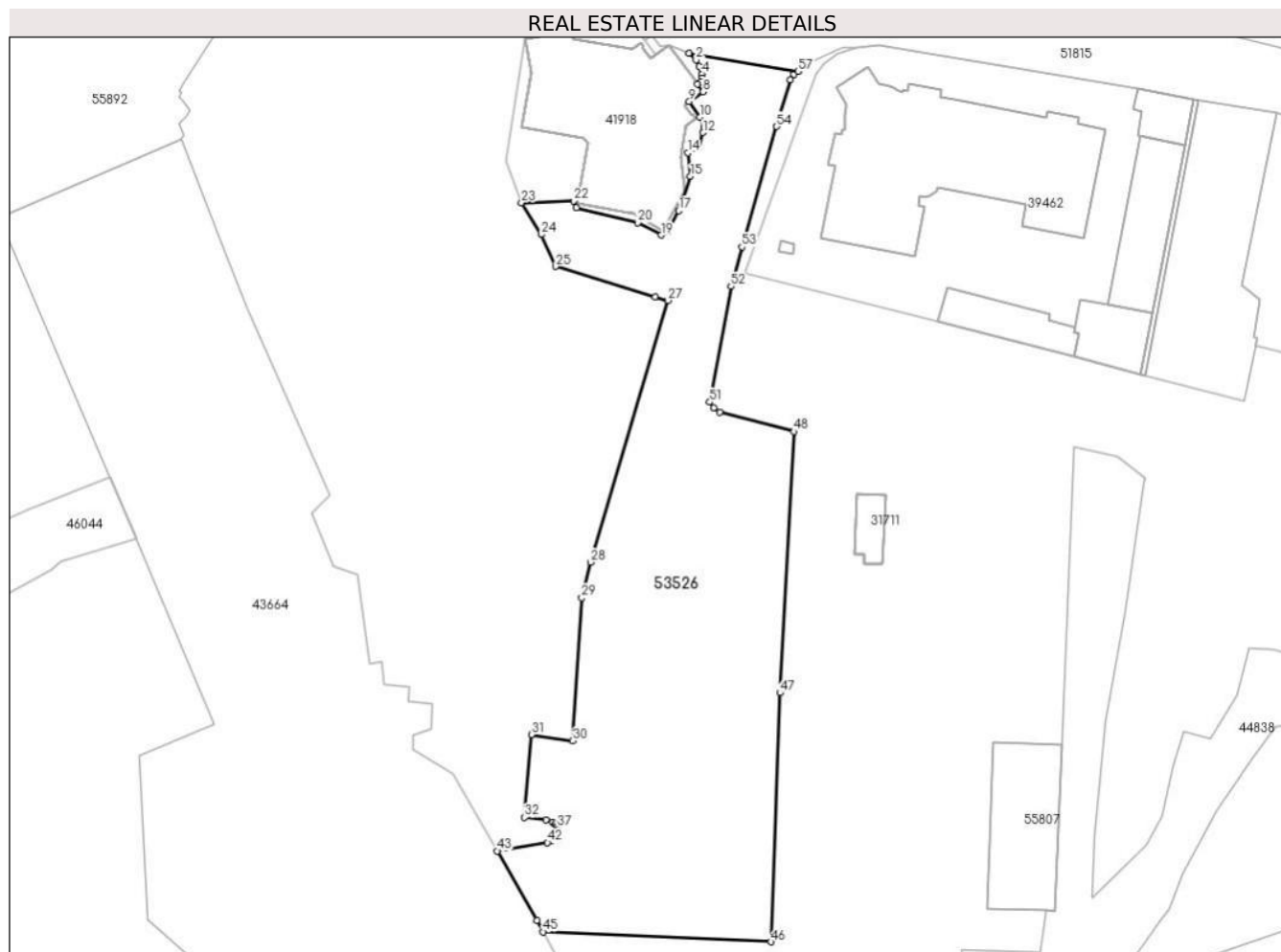
Entries regarding dismemberment of property rights, real rights of guarantee and encumbrances	References
NOT EXISTING	

Annex No. 1 To Part I

Land

Cadastral no.	Surface (sqm)*	Observations / References
53526	2,113	Building delimited by the fence of private properties.

* The surface is determined in the Stereo 70 projection plane.



Land related data

Item no.	Usage category	Land within the built-up area	Surface (sqm)	Strip land	Lot	Topographical no.	Observations / References
1	road	YES	2,113	-	1	-	

Segments length

1) The segment length values are obtained from the plan projection.

Start point	End point	Segment length	Start point	End point	Segment length	Start point	End point	Segment length
1	2	1,136	2	3	0,933	3	4	0,958
4	5	0,475	5	6	0,442	6	7	0,532
7	8	1,122	8	9	2,032	9	10	2,287
10	11	1,355	11	12	0,616	12	13	1,883
13	14	1,509	14	15	2,865	15	16	3,745
16	17	0,644	17	18	2,881	18	19	0,853
19	20	3,197	20	21	7,629	21	22	0,865
22	23	6,341	23	24	4,536	24	25	4,207

Start point	End point	Segment length	Start point	End point	Segment length	Start point	End point	Segment length
25	26	12,574	26	27	1,571	27	28	32,967
28	29	4,397	29	30	17.33	30	31	5.06
31	32	10,045	32	33	2,624	33	34	0,823
34	35	0,391	35	36	0,222	36	37	0,292
37	38	0,271	38	39	0,546	39	40	0,439
40	41	0,515	41	42	0.56	42	43	6,154
43	44	9,638	44	45	1,595	45	46	27,494
46	47	30,075	47	48	31,603	48	49	9,265
49	50	0,873	50	51	0,831	51	52	14,224
52	53	4,942	53	54	15,129	54	55	5,846
55	56	0.8	56	57	0,637	57	1	13,334

** Segment lengths are determined in the Stereo 70 projection plane and are rounded to 1 millimeter.

*** The distance between the points is made up of cumulative segments that are smaller than the value of 1 millimeter.